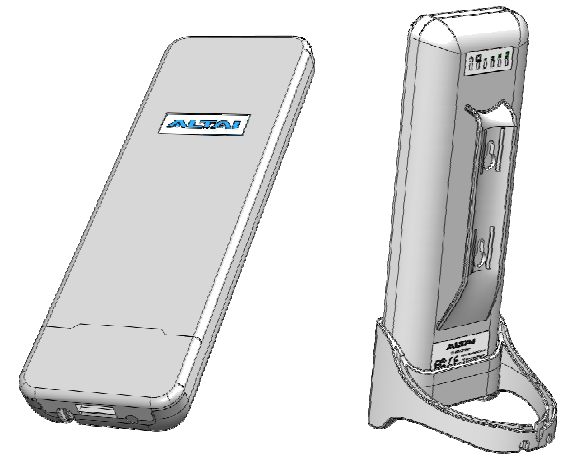


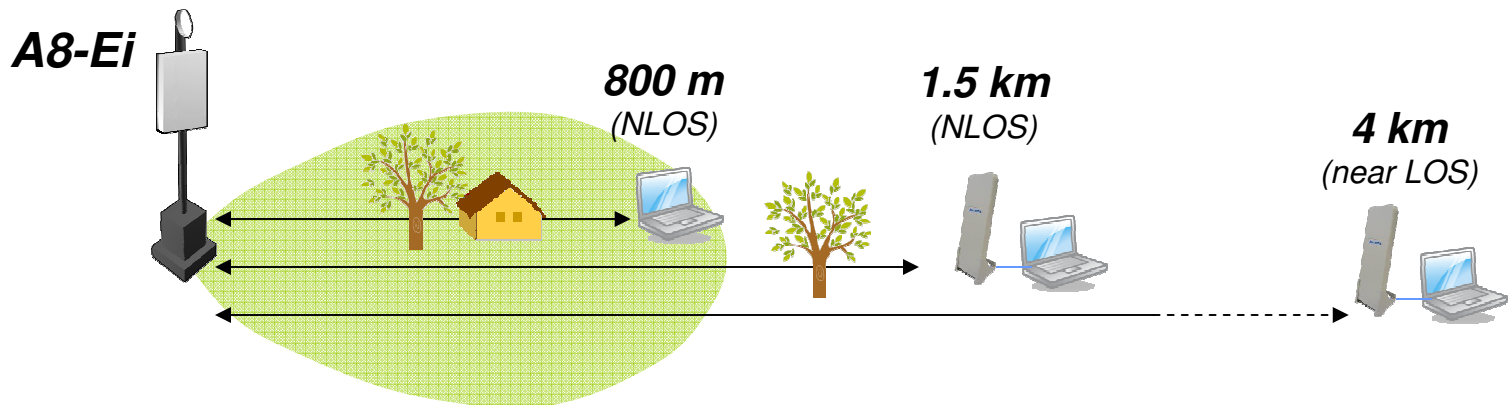
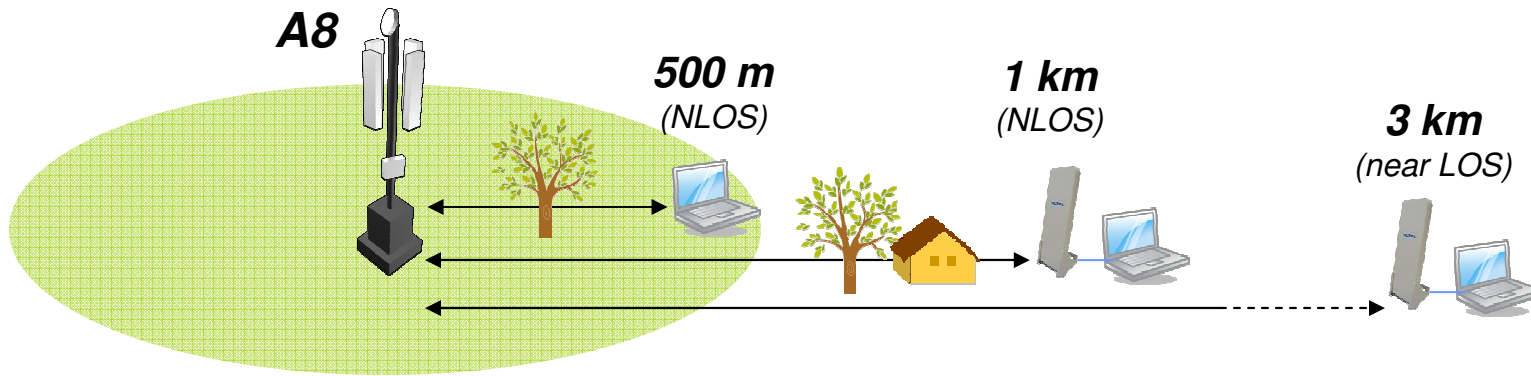


Altai C1 WiFi CPE/AP

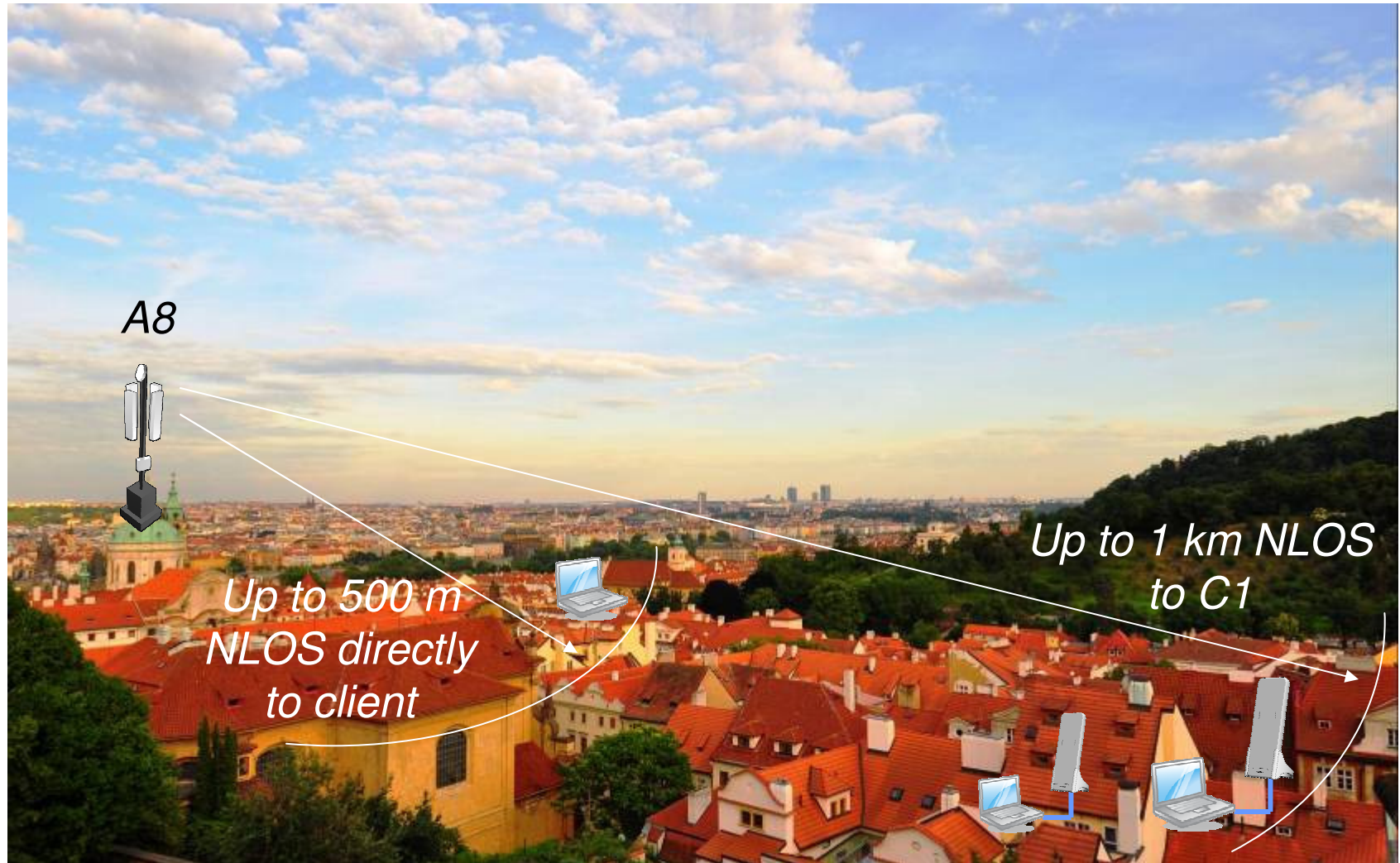
- Increase Distance and Throughput



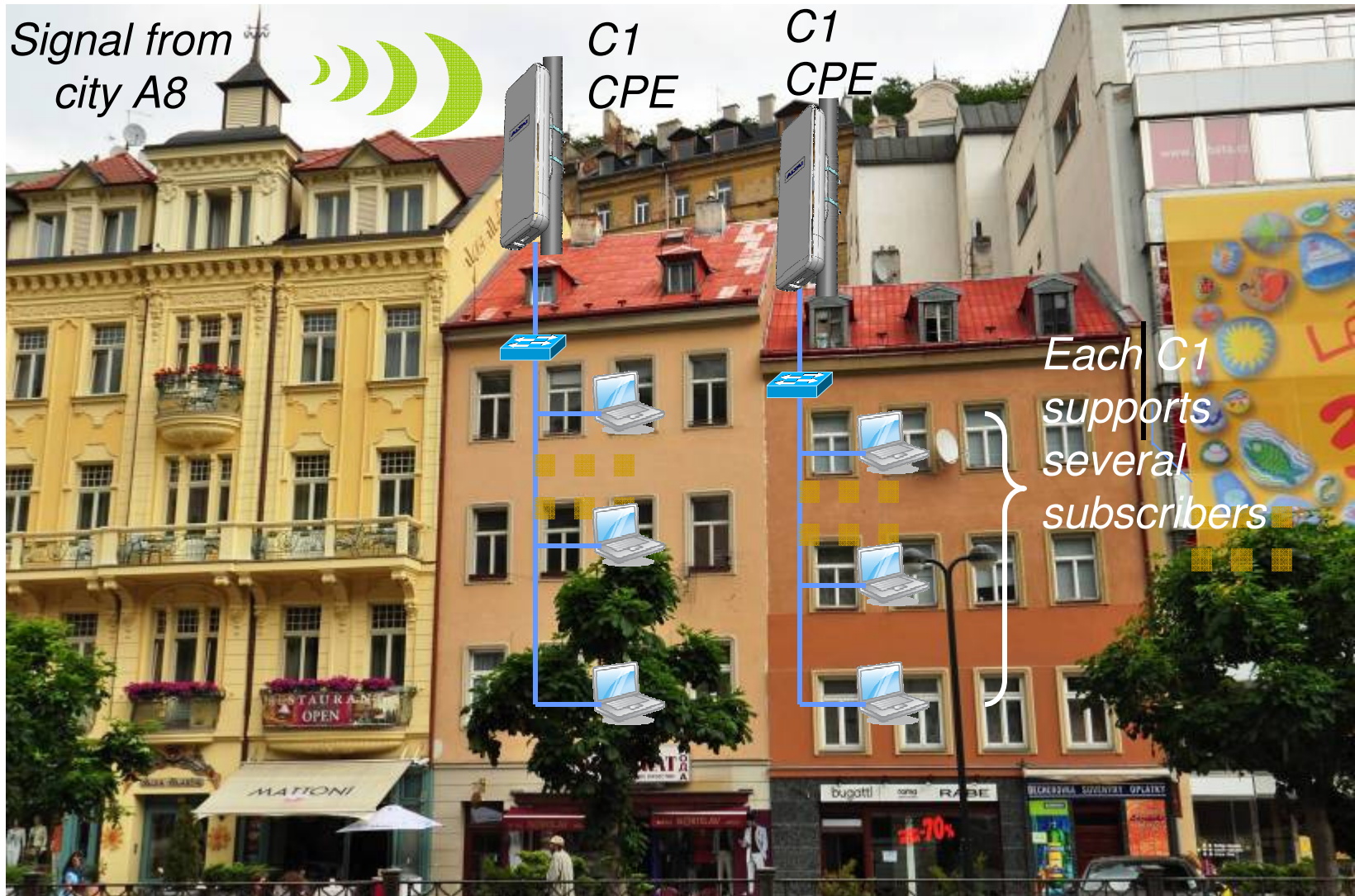
Altai C1 CPE Extends A8's NLOS Coverage To 1 km



Wireless DSL for Home Users



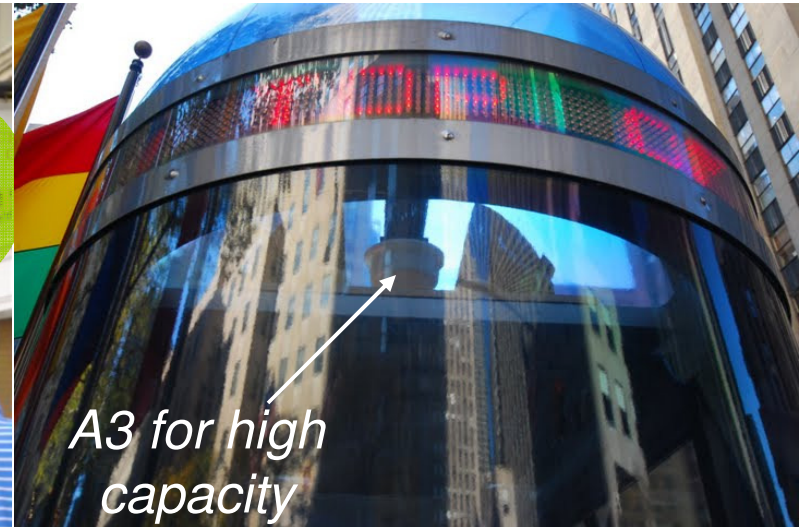
Wireless DSL for Houses



Hotspots at Coffee Shops & Restaurants



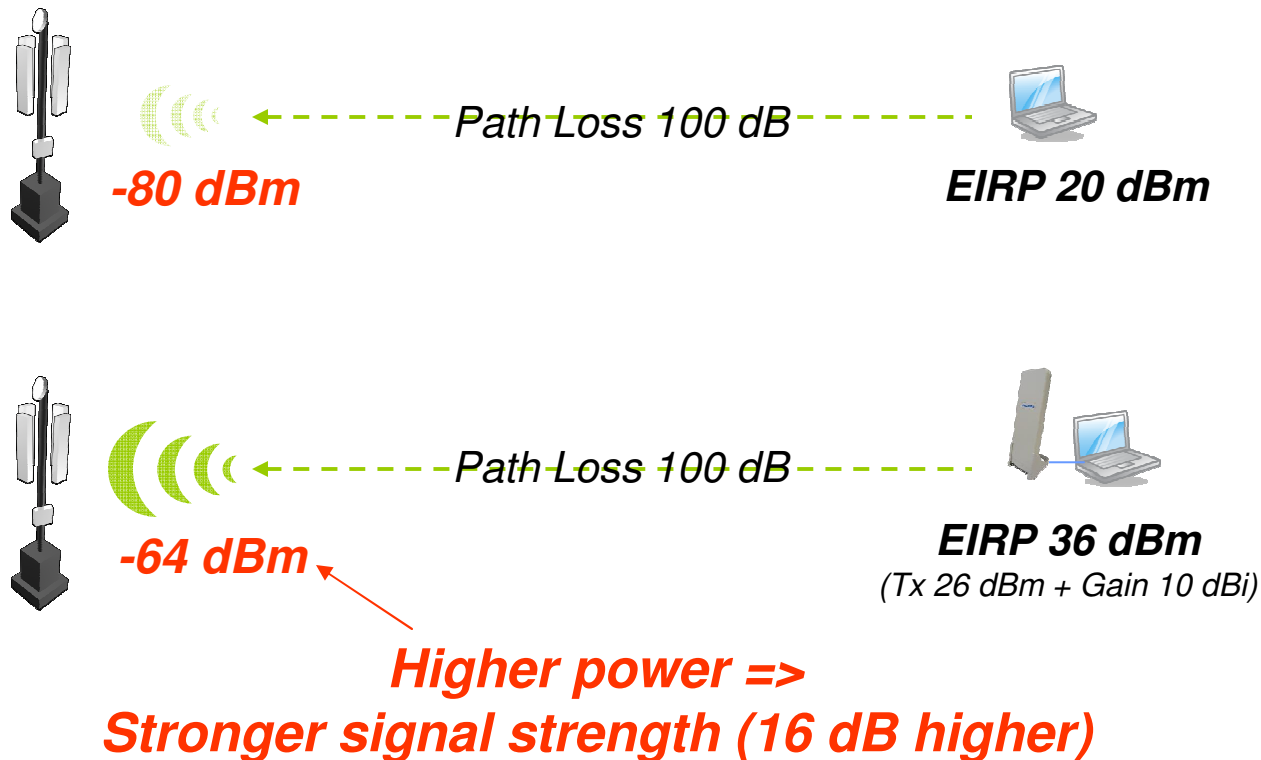
Hotspots at Telephone Booths



Rockefeller Plaza, New York

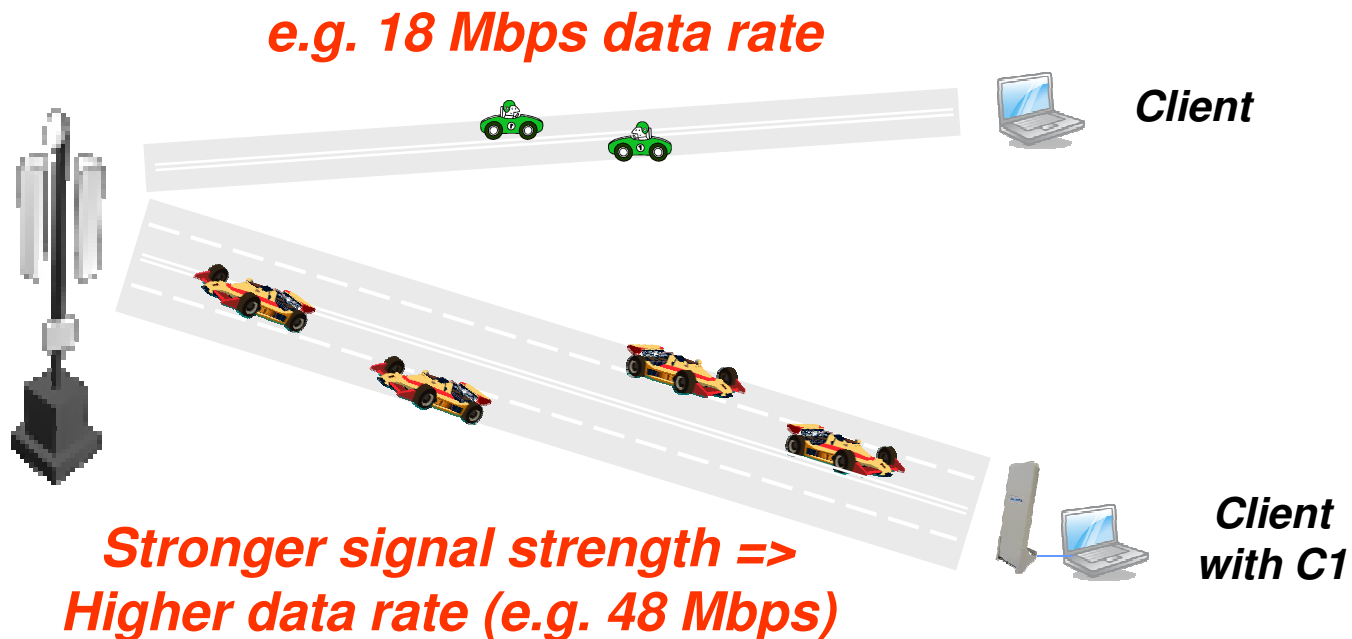
Altai C1 CPE Boosts Up Link Budget By 16 dB

- Providing Much Better Signal Quality



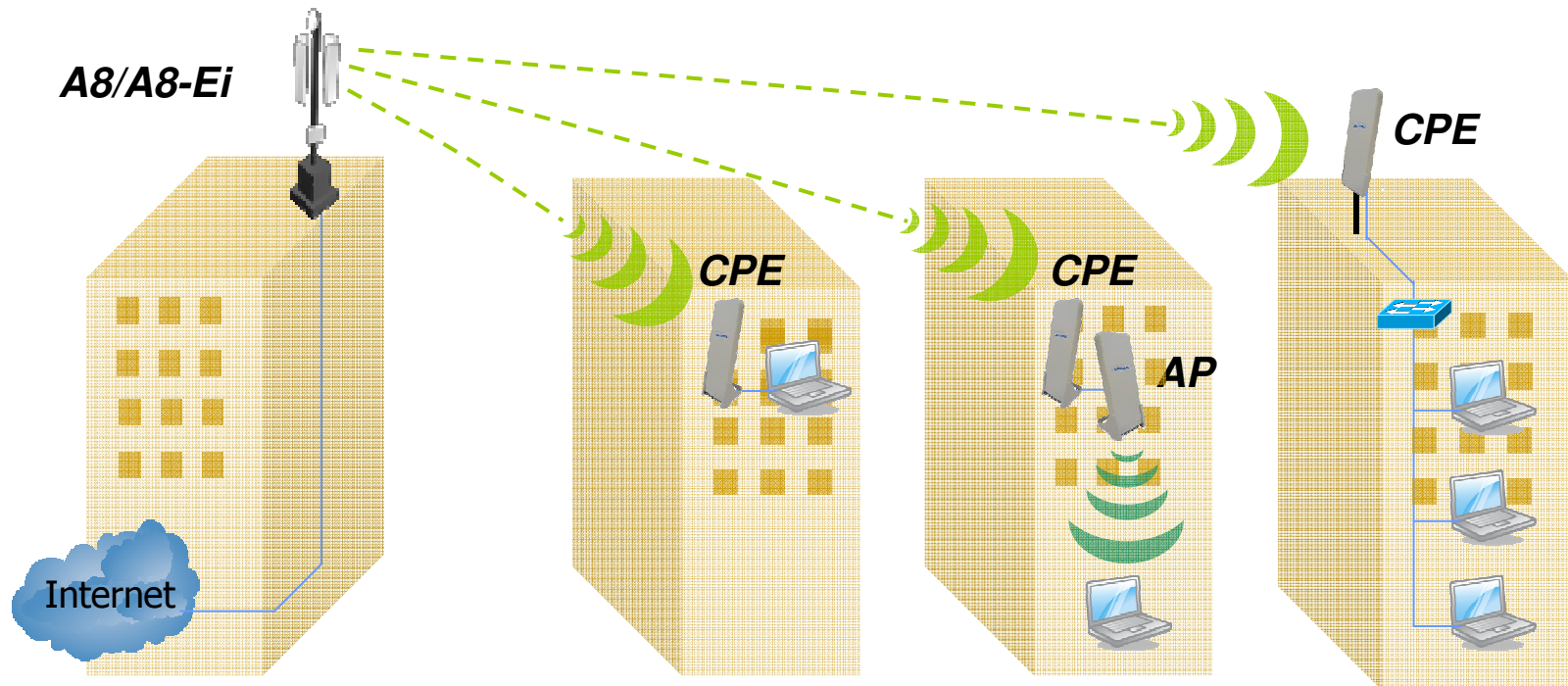
Altai C1 CPE Speeds Up 2 to 3 Times Data Rate and Throughput

- Better bandwidth utilization and network efficiency



Altai C1 Can be Configured as CPE or AP

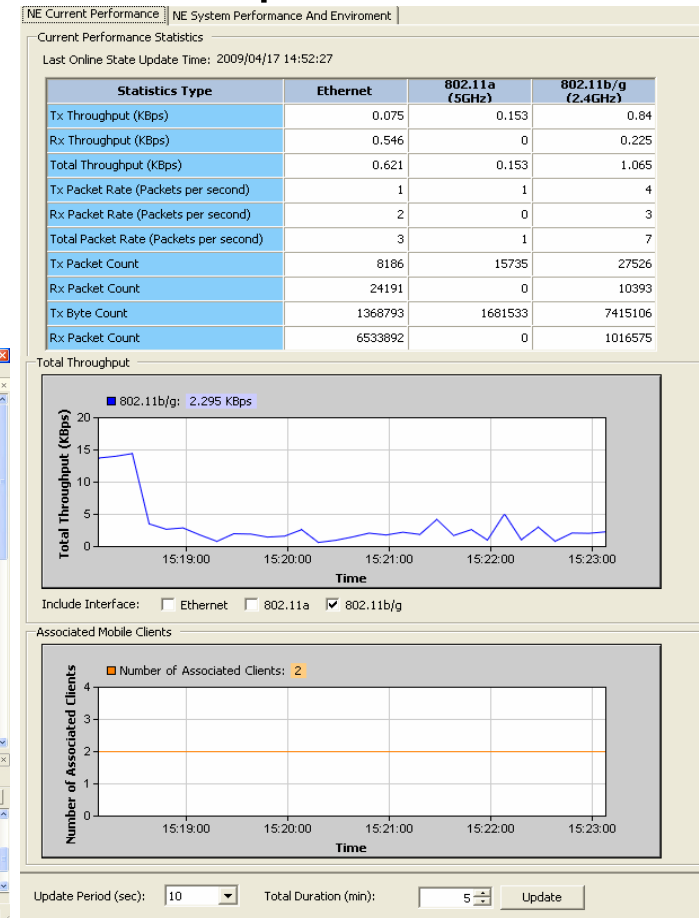
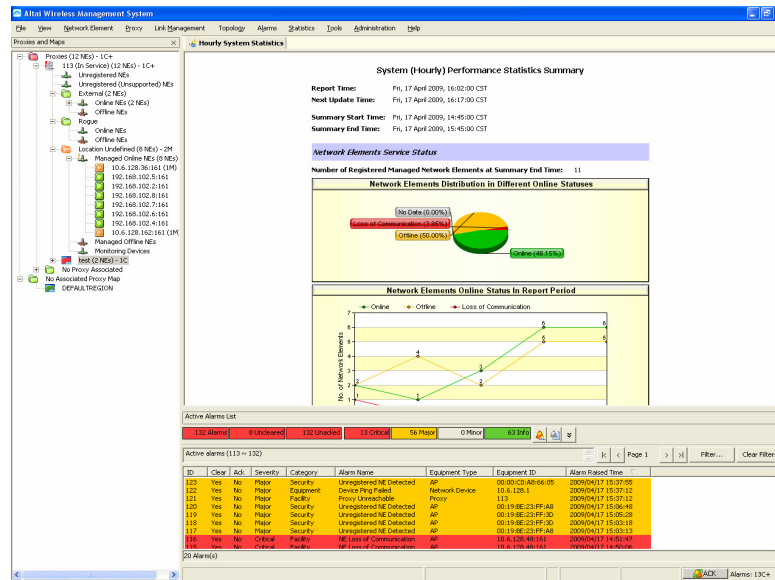
- Multiple deployment scenario for telecom operators
- Support bridge/router modes and WDS



Set at different channels for the best performance by minimizing interference to A8

Full Featured Altai Wireless Management System (AWMS)

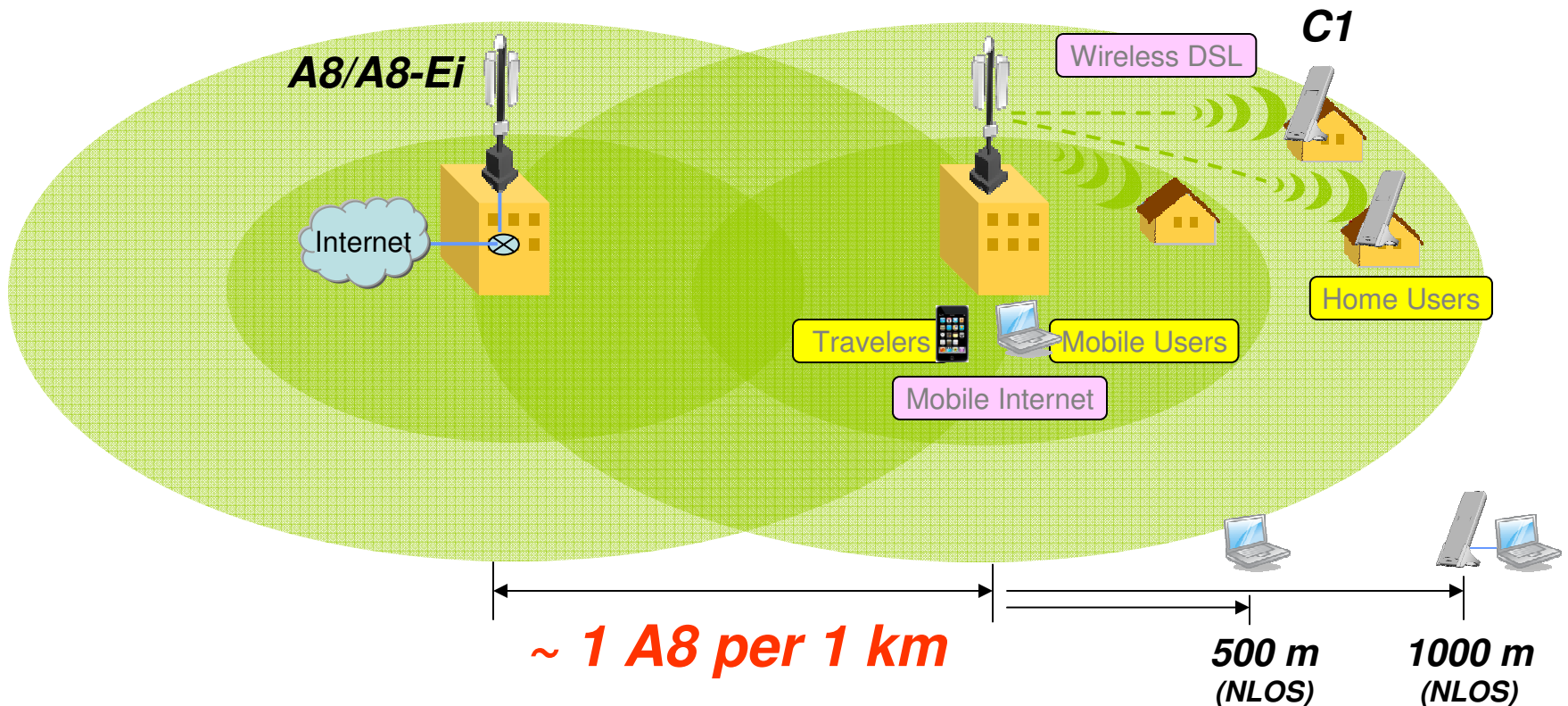
- C1 can be pre-configured per lot with user passwords
- Performance statistics
- Remote firmware upgrade
- Built-in bandwidth control*



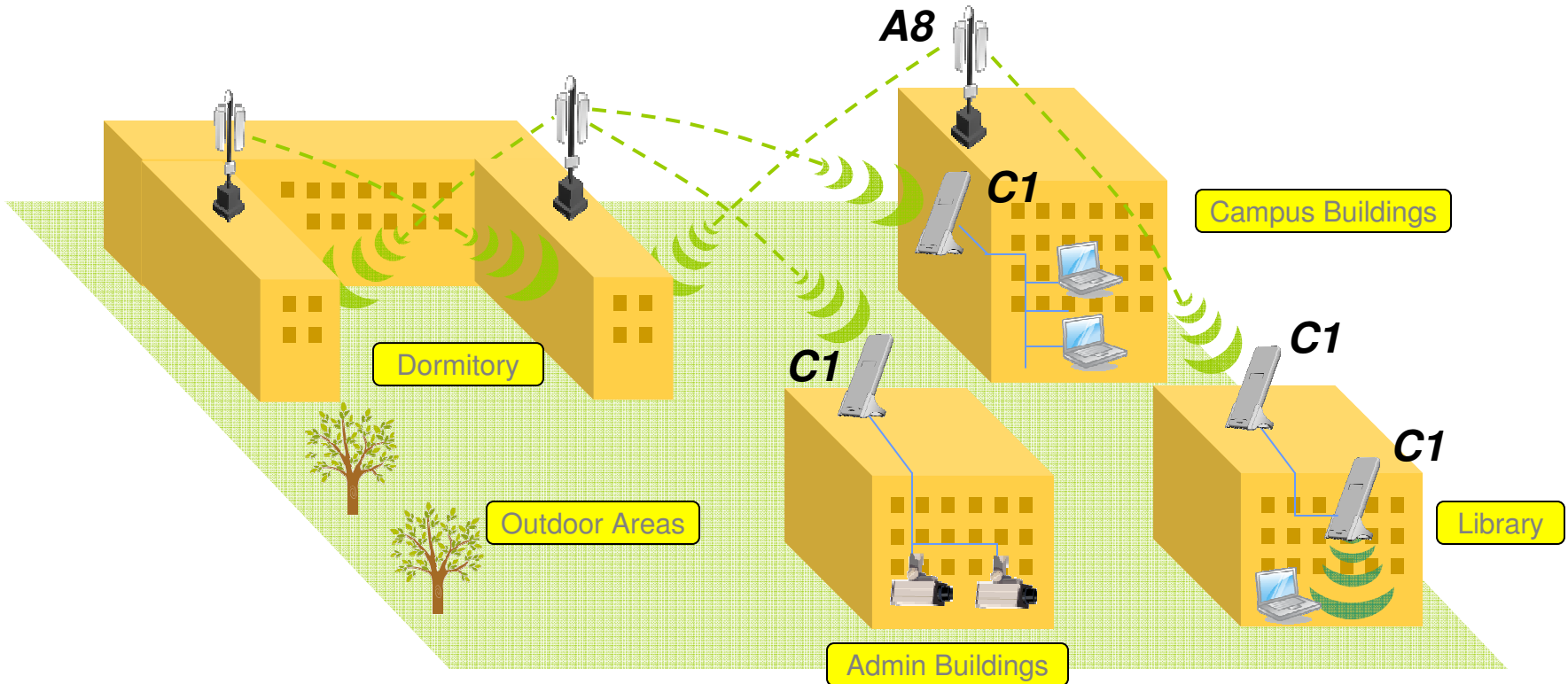
* In future release

Wireless DSL Architectural Design

- A8/A8-Ei can be placed every km apart in suburban areas
- C1 can extend coverage from 500 to 1000 m NLOS with A8



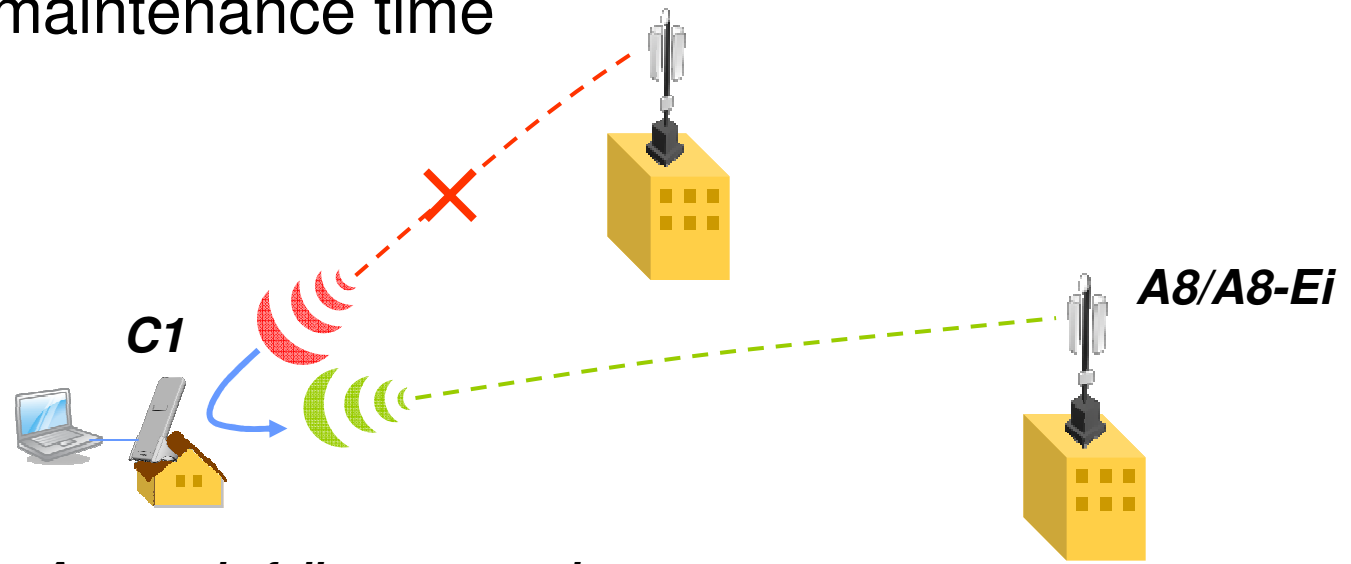
University and Campus Architectural Design



- C1 can extend A8 coverage to inner building areas
- C1 can lower total equipment costs
- C1 used for wireless cabling for video surveillance

Failover Protection Ensures Continuous Service Provision

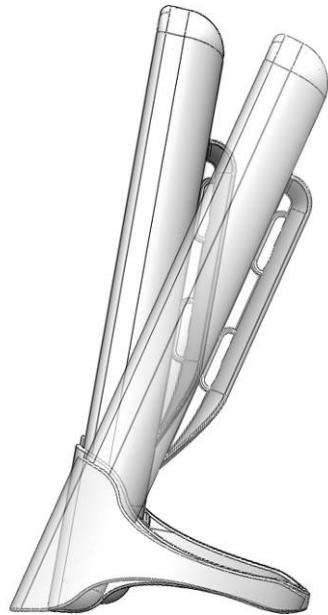
- When service outage is detected due to equipment failure or insufficient signal strength, C1 will start to scan and associate to another available A8/A8-Ei
- Double coverage design in radio planning
- Minimize maintenance time



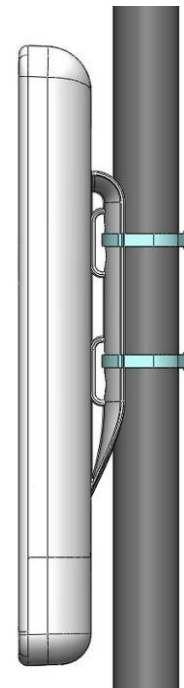
***Automatic failover to another
A8 with the same SSID***

Built-in Mounting Bracket and Two-Up-tilt-Position Table Stand

- Suitable for desktop, pole, wall or window mounting
- Outdoor weatherproof design



Desktop-mounted



Pole-mounted

8-level LED Signal Strength Indication for Simple Provisioning

- Auto searching for preferred SSID
- Aligning C1 in direction of strongest signal with help from LED signal indicators
- Plug and play by home users



Altai C1 WiFi CPE/AP Specifications

- Operation mode: CPE/AP
- Transmit power: 26 dBm (max.)
- 2 x built-in 10 dBi cross-polarized patch antenna
- Horizontal beamwidth: 70°; Vertical beamwidth: 30°
- LEDs indication for Power, Ethernet and 8-level Signal Strength
- Power source: PoE injector
- Power consumption: 4W (max.)
- Operating temperature: -10 to 55 °C
- Humidity: 5 to 95% (condensing)
- Weatherproof: IP55
- Dimension: 220 (H) x 80 (W) x 24 (D) mm
- Weight: 0.4 kg
- Mounting: Desktop/Pole/Wall/Window-mounted

