

The network challenge

The Wide Area Network (WAN) has inherent delay and bandwidth limitations. Applications deployed across the WAN are inefficient and slow due to these limitations. Further to this, repetitive data is sent across the WAN, increasing total utilisation and introducing congestion. Various applications further compete for these limited WAN resources causing congestion and degradation of critical applications. IT managers are realising that it is far more economic and effective to manage and optimize their existing infrastructure by understanding how it is used, defining what's important for the business and accelerating WAN & application performance.

The solution

Exinda Networks provides a range of fully integrated WAN & application acceleration (AA) appliances to accelerate the performance of enterprise applications over the WAN. Combined with Exinda's award-winning traffic management technologies, they deliver the complete solution for dynamic performance delivery across the WAN.

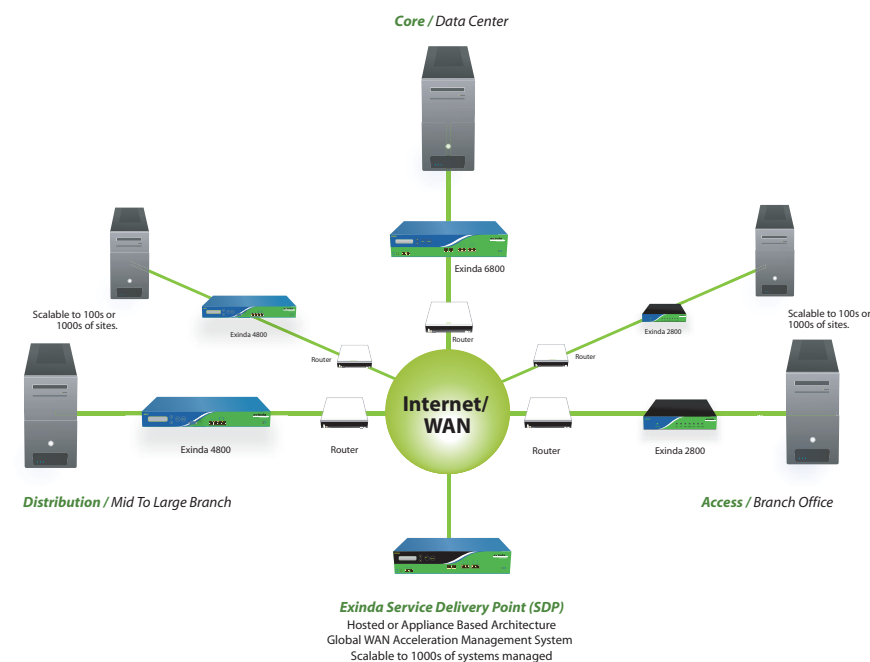
Exinda's x800 range offers a full spectrum of Application Acceleration, WAN Optimization and Traffic Management technologies in a proven, resilient platform. Businesses can produce exhaustive network reports, manage network usage, solve congestion issues, prioritise sensitive services and enable users to gain faster and uninterrupted access to applications across the world. Exinda's transparent acceleration protocol further allows a seamless network integration leaving all access controls rules and IDS/IPS policies in place.

Exinda Unified Performance Management (UPM)

UPM appliances are designed to accelerate applications on the network, measure application response times, manage applications at layer 7 and report on system wide application usage on a unified platform.

Introducing Exinda UPM: A single appliance providing Application Acceleration, Protocol Optimization, Caching & Data Compression, Application (Layer 7) Monitoring, Traffic Shaping / QoS, Application Specific Monitoring (ASAM - VoIP, Citrix, URL), Service Level Management (network & application), and Reporting & Notifications.

Exinda x800 is the only true UPM solution available today.



Product Brief

The Exinda x800 range offers acceleration and optimization of critical applications. It combines TCP acceleration, WAN memory and Exinda's full spectrum of L7 Traffic Management & WAN Optimization technologies.

Benefits

- Accelerated WAN applications deliver high productivity gains
- Optimized & controlled WAN communications
- Significant communications costs reductions
- Server infrastructure centralization and consolidation
- Maintain dynamic, resilient WAN performance
- Reduced infrastructure & upgrade costs
- Ensure predictable application performance
- Comprehensive Layer2 to Layer7 visibility
- Comprehensive, automated reporting
- Reduced network troubleshooting costs
- Reduced business continuity risk
- Voice & data effectively converged & prioritized

Specifications

Model	2800			4800				6800	
Licensed Acceleration Bandwidth Mbps	1	2	6	1	2	10	20	10	20
WAN Optimization & Monitoring Bandwidth Mbps : Options up to:	10	10	10	2	15	45	100	100	500
Device Throughput Mbps	100	100	100	100	100	100	100	1Gbps	1Gbps
Max Concurrent Flows	32000	32000	32000	32000	64000	128000	256000	256000	384000
Automated Configurable PDF Reports	4	4	4	4	4	8	16	20	32
Configurable SLA Reports	10	10	20	20	70	100	120	100	250
Policy Based Circuits	2	4	4	4	4	16	24	32	64
Policy Based Virtual Circuits	16	32	64	128	128	256	384	768	832
Policies	64	128	128	128	128	256	384	1024	1536
New L7 Connection Rate (max/sec)	30	30	30	100	100	100	100	400	400
ARM objects monitored	2	5	5	5	5	5	10	10	20
Application Acceleration									
Accelerated TCP Connections	50	100	150	150	200	1200	2000	4000	5000
Compression	■	■	■	■	■	■	■	■	■
WAN Memory (Data Sequence Caching)	■	■	■	■	■	■	■	■	■
Link Utilization Maximization	■	■	■	■	■	■	■	■	■
Packet Aggregation	■	■	■	■	■	■	■	■	■
Traffic Flow Optimization	■	■	■	■	■	■	■	■	■
Application Pipeline (accelerated open)	■	■	■	■	■	■	■	■	■
Hardware									
Network Interfaces	4	4	4	4	4	4	4	7	7
Ethernet bypass pairs	1	1	1	1	1	1	1	2	2
Network Expansion Ports (optional)				2	2	2	2		
Console Port	RS-232 male DB-9			RS-232 male DB-9				1xCOM (RJ45)	
Dual Power Supplies								■	■
Weight (kg)	2			6.5				13	
Dimensions (WxHxD)	214x44x150mm - 8.43"x1.73"x5.91"			424x43.5x380 mm - 16.8"x1.72"x11"				424x88x530mm - 16.8"x3.45"x20.9"	
Power & Environment									
Power	One power jack 12V, 5A 100/240 VAC, 50-60Hz			DC Maximum Requirement 100W, 100/240 VAC, 50-60Hz				DC Maximum Requirement 230W, AC/DC 90-245VAC full range @ 47-63Hz	
Approvals	CE, FCC Certified / RoHS			CE, FCC Certified / RoHS				CE, FCC Certified / RoHS	
Disk Storage (GB)	40	40	40	250	250	250	250	250	250

Features

- TCP protocol acceleration
- WAN memory
- Cross flow data compression
- Classification of applications at L7 with automated layer 7 signature updates
- Realtime drill down
- Automated PDF reporting
- Policy based QoS
- Service Level Management
 - Network Service (remote SLA)
 - Application Service (ARM)
- SIP based VoIP reporting
- Classify Citrix published Applications (ASAM)
- Adaptive Response
- 95th percentile calculations
- URL analysis (ASAM)



Exinda x800 Application Acceleration Solution

Technology

Exinda x800 High Performance (x800HP)

Delivering true UPM compatible WAN Acceleration, the Exinda x800HP series will allow you to choose the WAN monitoring and optimization performance level between 2Mbps and 500Mbps suited to your WAN or Internet link speeds, and seamlessly integrate the Application and TCP Acceleration bandwidth levels between 1Mbps and 20Mbps that match your business requirements or budget allocation.

To view a matrix of available options:

Visit: www.exinda.com/x800HP.html

TCP Acceleration

Reduces the effects of latency and increase throughput of TCP applications including HTTP, File transfers and remote backups. Increases WAN responsiveness up to a factor of up to 5500%.

WAN Memory

Reduces the amount of data sent and increases traffic throughput. Significantly reduces delay on multiple gets of repetitive data. Increases WAN capacity by a factor exceeding 2000%.

Application Layer 7 Classification and Monitoring

Signature based classification identifies applications such as Peer-to-Peer and

those that use common protocols such as HTTP.

Exinda's High speed hardware (ASIC) based classification (6720) allows wire-speed monitoring at speeds of up to 1Gbps. Track usage and network utilisation by application, hosts or conversations. Extensive reporting via automated PDF and CSV exports.

Application Specific Analysis Modules (ASAM)

Exinda supports modules for detailed classification and analysis of specific applications such as HTTP, VoIP, Citrix. Monitor voice calls and conversations in realtime.

Application Response Measurement (ARM)

Monitor application response times across network and server infrastructure. Measure and manage user experience across applications.

Adaptive Response (AR)

Set alerts, notifications and run custom scripts based on system wide triggers.

Policy based QoS

Allow for granular traffic control and application quality of service (QoS).

USA / Americas main office

8 Faneuil Hall Marketplace
3rd Floor Boston, MA 02109
United States

Tel: +1 617 973 6477
Fax: +613 9415 8337
email: info.americas@exinda.com

Australia / APAC main office

Level 1, Unit 4
29 Cromwell Street
Collingwood, VIC 3066
Australia

Tel: +61 (0)3 9415 8332
Fax: +61 (0)3 9415 8337
email: info.apac@exinda.com

Germany / EMEA main office

Hessenring 121
D-61348 Bad Homburg
Germany

Phone: +49-6172-943-787
Fax: +49-6172-943-788
eMail: info.emea@exinda.com

United Kingdom

54 Clarendon Road
Watford, Hertfordshire
WD17 1DU
United Kingdom

Tel: +44 (0)1923 431661
Fax: +44 (0)1923 431861
email: info.emea@exinda.com

Please visit :

<http://www.exinda.com/public/contact.html>

for further international office locations.